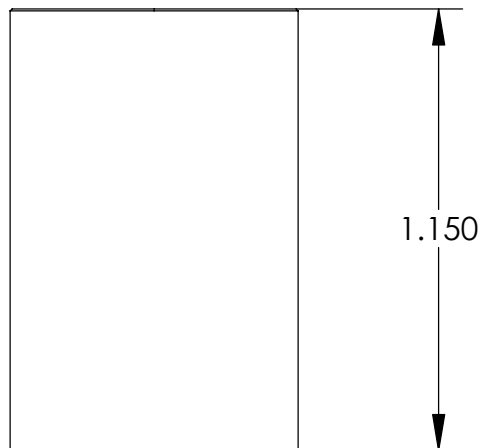
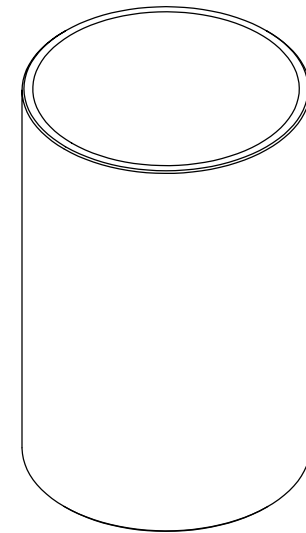


REVISIONS		
REV	DESCRIPTION	DATE



NOTES:
1. MAKE FROM .75 X .028" WALL TUBING.

UNLESS OTHERWISE SPECIFIED:		<div>High Precision Devices</div> <div>1668 Valtec Lane, Suite C, Boulder, Colorado 80301</div> <div>Phone: (303) 447-2558 Fax: (303) 447-2548 Web Site: www.hpd-online.com</div>			
DIMENSIONS ARE IN INCHES DECIMAL TOLERANCES: .X ±.030 .XX ±.015 .XXX ±.005					
ANGULAR TOL: ± 1° SURFACE ROUGHNESS:63/√		TITLE: p02101-110 tube, .75 pant leg, precool			
INTERNAL AND EXTERNAL SURFACE INTERSECTIONS SHALL BE UNIFORMLY FINISHED WITH CHAMFER .005/.010 X 45° OR RADIUS .005/.010. CHAMFER ALL THREADED HOLES 110° OF MAJOR DIAMETER X 45°					
		CONFIGURATION: 00-Default			
MATERIAL: 304 SST Tube	SIZE A	QTY PER ASSM: 1	SCALE: 2:1	SHEET 1 OF 1	REV A
FINISH: NONE		DATE: 5/20/2004	DRAWN BY: C. Danaher		